



# GAT MONTHLY MEMBERSHIP PROGRESS REPORT

Results as of: 2/28/2023

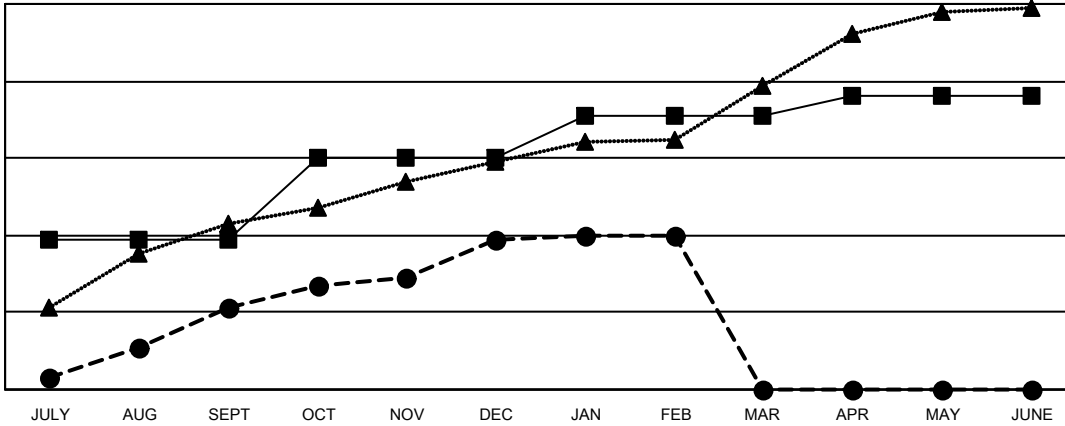
Multiple District 315

LOCATION: REP OF BANGLADESH

| Clubs                 |               |           |               |
|-----------------------|---------------|-----------|---------------|
| RESULTS FOR 2022-2023 |               |           |               |
| QUARTER               | NEW CLUB GOAL | NEW CLUBS | DROPPED CLUBS |
| JULY/AUG/SEPT         | 39            | 21        | 1             |
| OCT/NOV/DEC           | 21            | 18        | 12            |
| JAN/FEB/MAR           | 11            | 1         | 1             |
| APR/MAY/JUNE          | 5             | 0         | 0             |

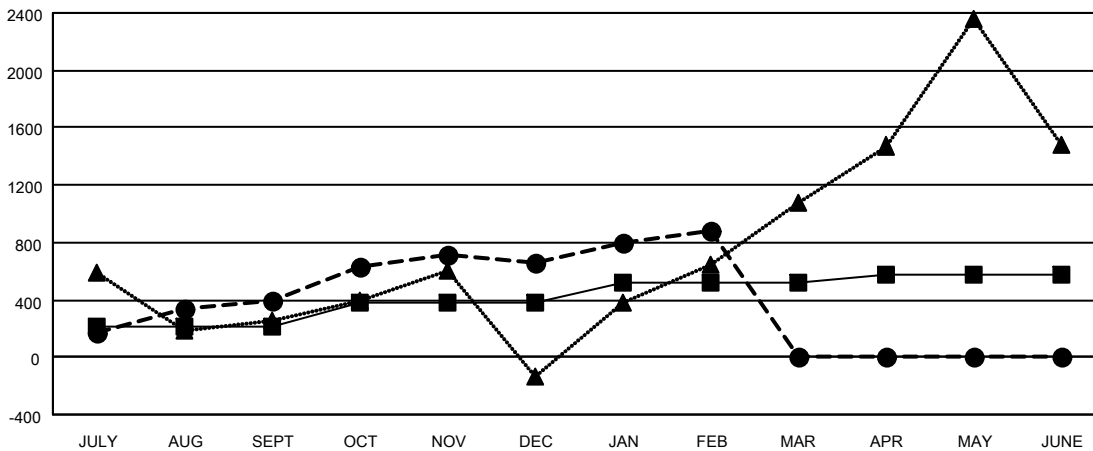
| Members               |                        |                      |  |
|-----------------------|------------------------|----------------------|--|
| RESULTS FOR 2022-2023 |                        |                      |  |
| QUARTER               | MEMBER GROWTH NET GOAL | MEMBER GROWTH ACTUAL | DROPPED MEMBERS ACTUAL (including transfers) |
| JULY/AUG/SEPT         | 209                    | 1,043                | 555  |
| OCT/NOV/DEC           | 173                    | 859                  | 561  |
| JAN/FEB/MAR           | 139                    | 411                  | 155  |
| APR/MAY/JUNE          | 53                     | 0                    | 0  |

GOALS AND ACTUAL NEW CLUBS CUMULATIVE



- CURRENT YEAR GOALS FOR NEW CLUBS
- CURRENT YEAR ACTUAL NEW CLUBS
- ▲- LAST YEAR ACTUAL NEW CLUBS

GOALS AND ACTUAL MEMBERS CUMULATIVE



- MEMBER GROWTH NET GOAL
- MEMBER GROWTH ACTUAL
- ▲- LAST YEAR MEMBERSHIP ACTUAL

|                          |   |  |
|--------------------------|---|--|
| <b>DROPPED CLUBS: 14</b> | <b>310 CLUBS OF 741 ADDED 1 OR MORE NEW MEMBERS</b>       | <b>GENDER DISTRIBUTION</b>                   |
| <b>DROPPED MEMBERS</b>   | <a href="#">CLICK HERE FOR CUMULATIVE MEMBERSHIP DATA</a> | MALE 15,689 (76.77%)                         |
| DECEASED 11              |   | FEMALE 4,747 (23.23%)                        |
| CLUB CANCELLED 258       |   | NON BINARY 0 (0.00%)                         |
| OTHER 1,002              |   | PREFER NOT TO ANSWER 1 (0.00%)               |
| <b>TOTAL 1,271</b>       |   | <b>TOTAL FAMILY UNIT MEMBERS 11,109</b>      |
|                          |   | <b>FAMILY MEMBERS PAYING HALF DUES 7,844</b> |